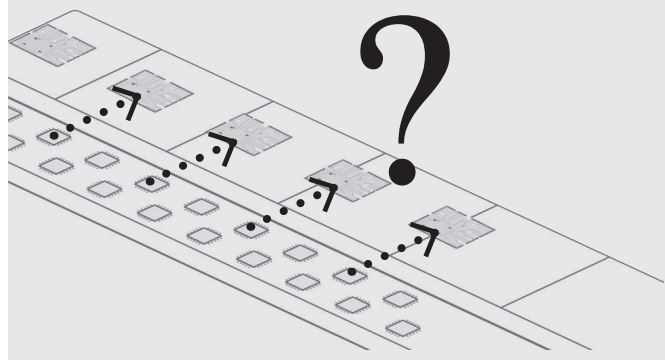


Assemble



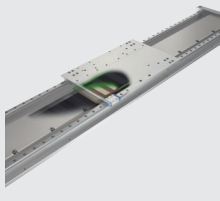
Thinking...Quickly and
Accurately Place Small
Parts in Fixed Positions



With IKO mechatronics series such as...



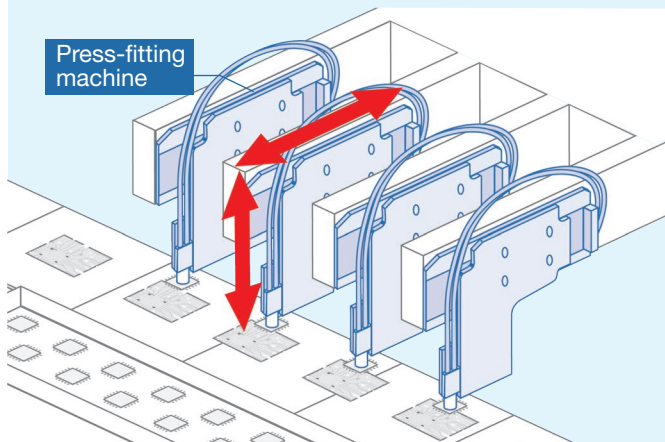
Nano Linear NT...XZ



Linear Motor Table LT

Nano Linear NT...XZ is a linear motor-driven super slim type table that can move vertically and horizontally at the same time. Linear Motor Table LT is a linear motor-driven linear positioning device that is compact and has high static stability.

Problem Solved!

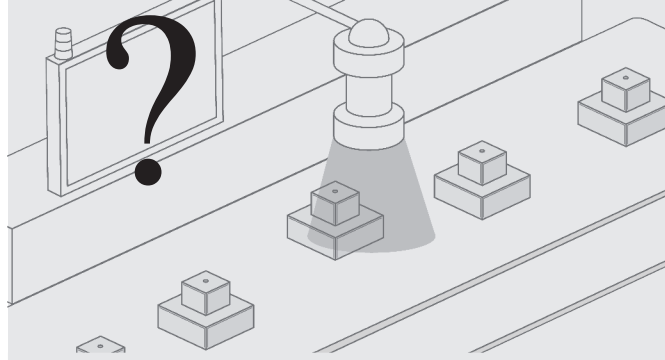


Utilizing multiple Nano Linear NT...XZ units side by side with integrated X and Z axis movement means multiple parts can be mounted in one motion. Additionally, using Linear Motor Table LT on the Y-axis enables the hand to be moved over the pallets arranged in the Y-axis direction, allowing parts to be taken out quickly and accurately.

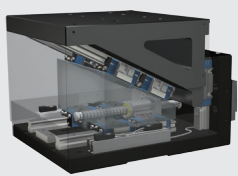
Measure



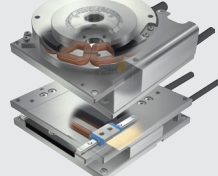
Thinking...Accurately Measure
the size of Components in a
Production Line



With IKO mechatronics series such as...



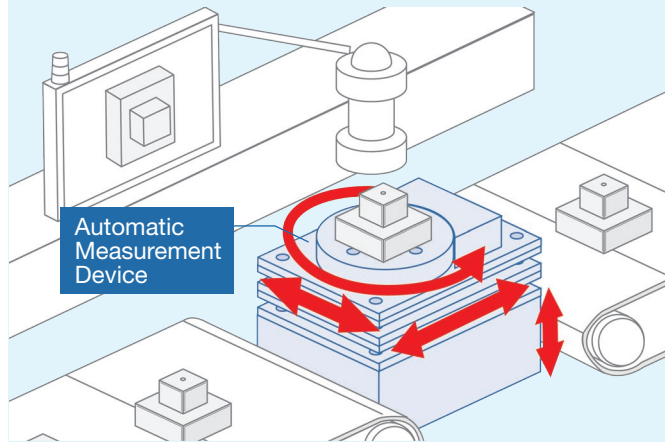
Precision Elevating Table TZ



Alignment Stage SA...DE

Precision Elevating Table TZ is an elevating table that uses a wedge mechanism to perform precise positioning. Alignment Stage SA...DE is a positioning table that realizes highly accurate XYθ motion driven by a linear motor by combining SA for θ movement and an XY table.

Problem Solved!



The Precision Elevating Table TZ moves up and down to adjust the distance to the camera, while the alignment stage SA moves and rotates the workpiece to accurately move the part to be measured within the camera's view. Even if the position of the transferred workpiece shifts, it is possible to accurately find the component you want to measure.

NIPPON THOMPSON CO., LTD. (JAPAN)

Head Office : 19-19, Takanawa 2-chome, Minato-ku,
Tokyo, 108-8586, Japan
Phone : +81 (0)3-3448-5850
Fax : +81 (0)3-3447-7637
E-mail : ntt@ikonet.co.jp
URL : <https://www.ikont.co.jp/>
Plant : Gifu, Kamakura



IKO INTERNATIONAL, INC. (U.S.A.)

East Coast Operations (Sales Head Office)

91 Walsh Drive,
Parsippany, NJ, 07054,
U.S.A.
Phone : +1-973-402-0254
Toll Free : +1-800-922-0337
Fax : +1-973-402-0441
E-mail : eco@ikonet.co.jp



Midwest Operations

101 Mark Street, Unit-G,
Wood Dale, IL, 60191,
U.S.A.
Phone : +1-630-766-6464
Toll Free : +1-800-323-6694
Fax : +1-630-766-6869
E-mail : mwo@ikonet.co.jp

Minnesota Sales Office

1500 McAndrews Road West, Suite 210,
Burnsville, MN, 55337,
U.S.A.
Phone : +1-952-892-8415
Toll Free : +1-800-323-6694
Fax : +1-952-892-1722
E-mail : mwo@ikonet.co.jp

West Coast Operations

9830 Norwalk Boulevard, Suite 198,
Santa Fe Springs, CA, 90670,
U.S.A.
Phone : +1-562-941-1019
Toll Free : +1-800-252-3665
Fax : +1-562-941-4027
E-mail : wco@ikonet.co.jp

Silicon Valley Sales Office

1500 Wyatt Drive, Suite 10,
Santa Clara, CA, 95054,
U.S.A.
Phone : +1-408-492-0240
Toll Free : +1-800-252-3665
Fax : +1-408-492-0245
E-mail : wco@ikonet.co.jp

Southeast Operations

3235 Satellite Boulevard
Building 400, Suite 230
Duluth, GA, 30096,
U.S.A.
Phone : +1-770-418-1904
Toll Free : +1-800-874-6445
Fax : +1-770-418-9403
E-mail : seo@ikonet.co.jp

Southwest Operations

8105 N. Bellline Road, Suite 130,
Irving, TX, 75063,
U.S.A.
Phone : +1-972-929-1515
Toll Free : +1-800-295-7886
Fax : +1-972-915-0060
E-mail : swo@ikonet.co.jp

IKO THOMPSON BEARINGS CANADA, INC.(CANADA)

731-2425, Matheson Boulevard East, 7th floor,
Mississauga, Ontario, L4W 5K4, Canada
Phone : +1-905-361-2872
Fax : +1-905-361-6401
E-mail : itc@ikonet.co.jp

IKO BRASIL SERVIÇOS EMPRESARIAIS EIRELI (BRAZIL)

Rua Frei Caneca 1407,
Condomínio Edifício Barão de Monte Cedro,
Cjs. 801/802, Consolação, São Paulo- SP
Cep : 01307-909
Phone : +55 (0)11-2366-3033
E-mail : itb@ikonet.co.jp

NIPPON THOMPSON EUROPE B.V. (EUROPE)

The Netherlands (Sales Head Office)

Keersopstraat 35,
3044 EX, Rotterdam,
The Netherlands
Phone : +31 (0)10-462 68 68
E-mail : nte@ikonet.co.jp



Germany Branch

Mündelheimer Weg 54,
40472 Düsseldorf,
Germany
Phone : +49 (0)211-41 40 61
Fax : +49 (0)211-42 76 93
E-mail : ntd@ikonet.co.jp

Regensburg Sales Office

Im Gewerbepark D 30,
93059 Regensburg,
Germany
Phone : +49 (0)941-20 60 70
Fax : +49 (0)941-20 60 719
E-mail : ntdr@iko-nt.de

Neunkirchen Sales Office

Gruben Str. 95c,
66540 Neunkirchen,
Germany
Phone : +49 (0)6821-99 98 60
Fax : +49 (0)6821-99 98 626
E-mail : ntdn@iko-nt.de

U.K. Branch

2 Vincent Avenue, Crownhill,
Milton Keynes, Bucks, MK8 0AB,
United Kingdom
Phone : +44 (0)1908-566144
Fax : +44 (0)1908-565458
E-mail : sales@iko.co.uk

Spain Branch

Autovia Madrid-Barcelona, Km. 43,700
Polig. Ind. AIDA - Nove A-8, Ofic. 2-1ª
19200-Azuqueca de Henares,
(Guadalajara) Spain
Phone : +34 949-26 33 90
Fax : +34 949-26 31 13
E-mail : nts@ikonet.co.jp

France Branch

Bâtiment le Raphaël-Paris, Nord 2,
22 avenue des Nations
BP54394 Villepinte
95943 ROISSY C.D.G Cedex
France
Phone : +33 (0)1-48 16 57 39
Fax : +33 (0)1-48 16 57 46
E-mail : ntf@ikont.eu

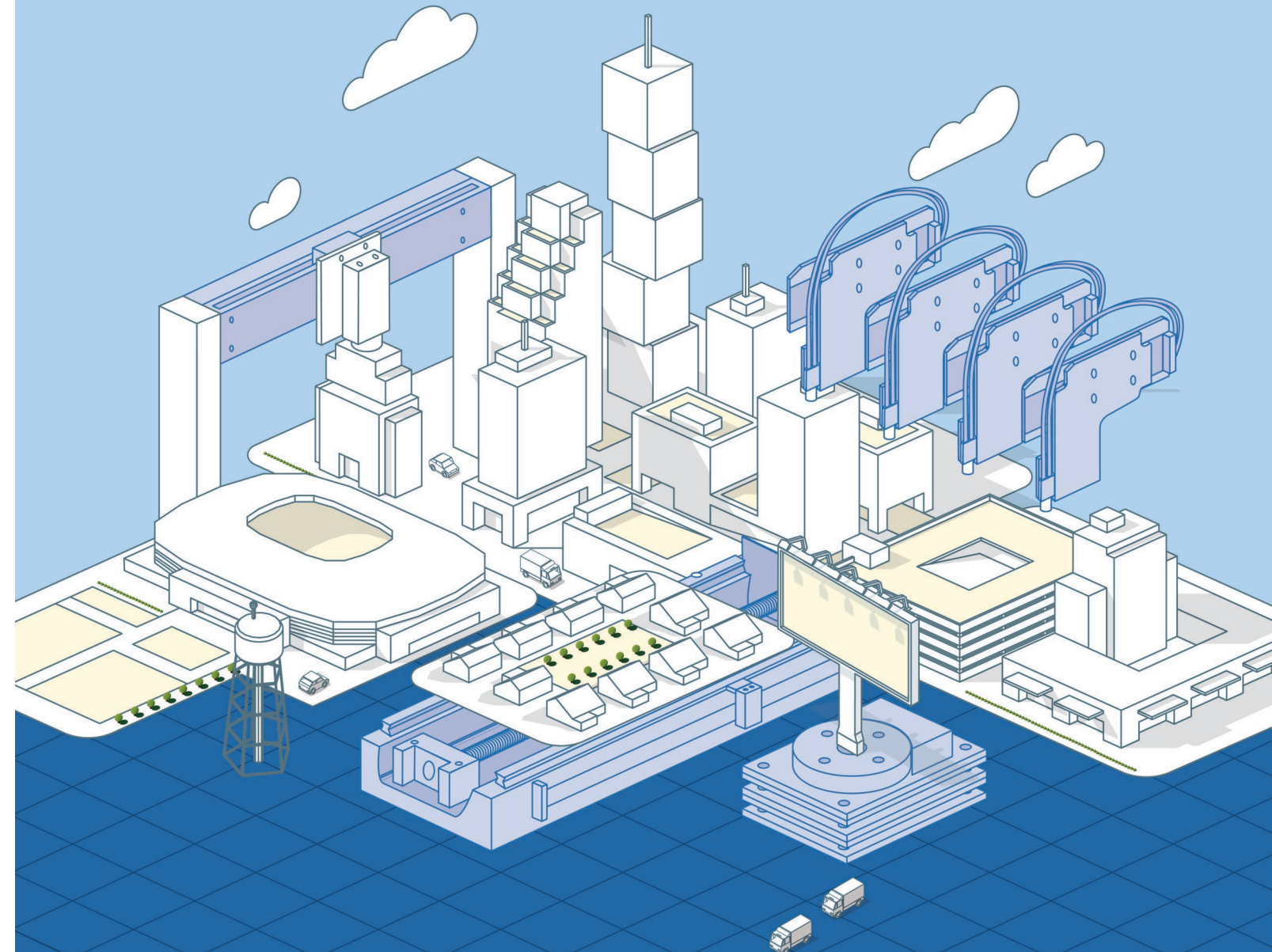
IKO THOMPSON ASIA CO., LTD. (THAILAND)

1-7 Zuellig House, 3rd Floor,
Silom Road, Silom, Bangrak,
Bangkok 10500, Thailand
Phone : +66 (0)2-637-5115
Fax : +66 (0)2-637-5116
E-mail : ita@ikonet.co.jp

IKO

IKO Mechatronics Series

Expanding the Possibilities for the Manufacturing World



Mechatronics Series
Dedicated Website



ISO 9001 & 14001 Quality system registration certificate

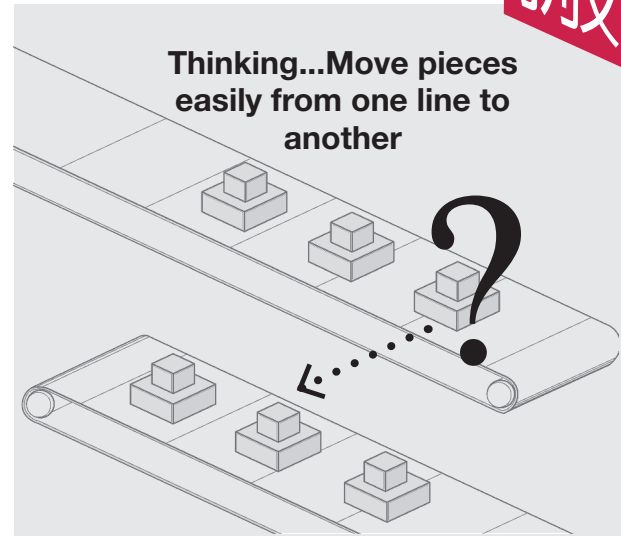
CAT-2960E Printed in Japan ©2020.12 (AK)



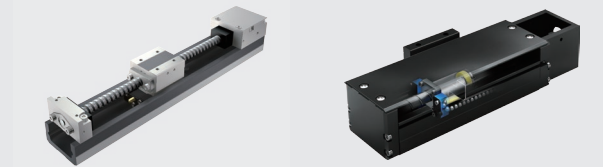
* The specifications and dimensions of products in this catalog are subject to change without prior notice. * When these products are exported, the exporter should confirm a forwarding country and a use, and, in case of falling under the customer's requirements, take necessary procedures such as export permission application. * Although all data in this catalog has been carefully compiled to make the information as complete as possible, NIPPON THOMPSON CO., LTD. shall not be liable for any damages whatsoever, direct or indirect, based upon any information in this catalog. NIPPON THOMPSON CO., LTD. makes no warranty, either express or implied, including the implied warranty of merchantability or fitness for a particular purpose. * Reproduction and conversion without permission are prohibited.

<https://www.ikont.co.jp/eg/>

Carry



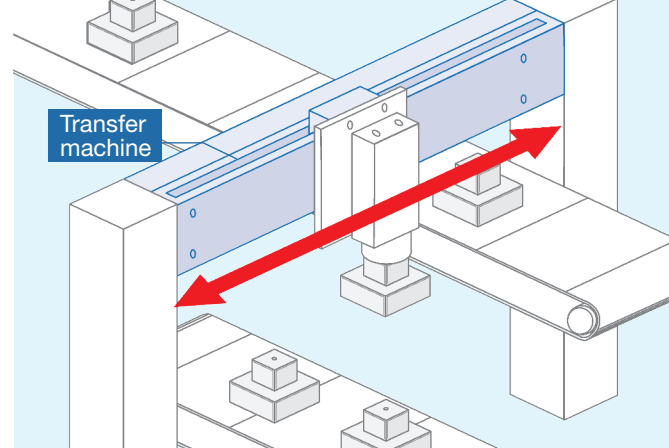
With IKO mechatronics series such as...



Ball Screw Driven Precision Positioning Table TU Ball Screw Driven Precision Positioning Table TE

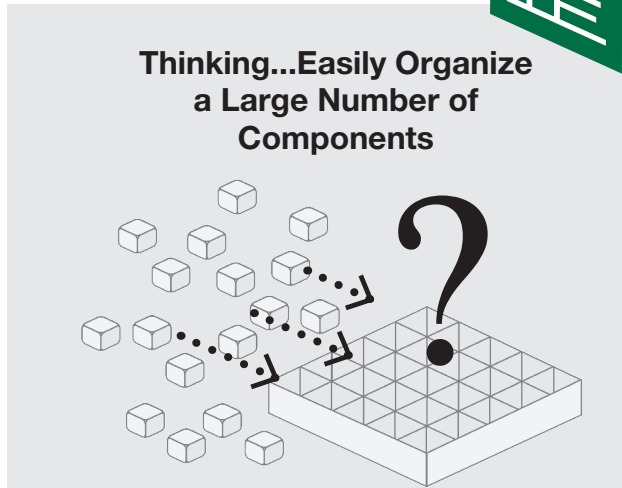
Precision Positioning Table TU is a positioning table that offers high rigidity and utilizes a U-shaped track rail. Precision Positioning Table TE is a lightweight, low profile linear positioning device that uses aluminum for its components and has a maintenance-free C-Lube unit built into the linear motion rolling guide.

Problem Solved!

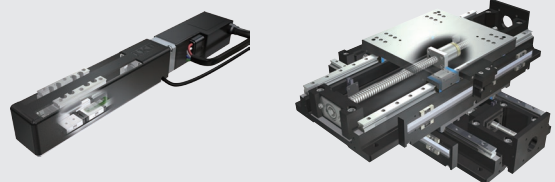


High rigidity Precision Positioning Table TU can transfer pieces between lines. Even heavy objects can be reliably transferred. If weight reduction of the entire device is needed, or to reduce lubrication maintenance hours, we recommend using TE type positioning tables that utilize aluminum components and a C-Lube unit that is built into the linear motion guide to provide long-term, maintenance-free operation.

Organize



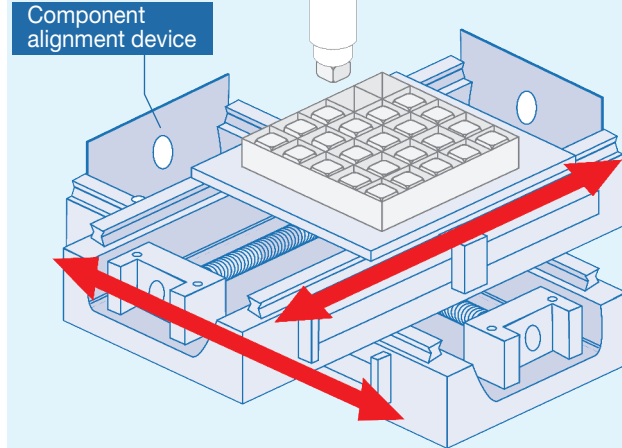
With IKO mechatronics series such as...



Micro Precision Positioning Table TM Precision Positioning Table CTX

Micro Precision Positioning Table TM utilizes an ultra-compact linear way for the linear motion rolling guide making it extremely compact and lightweight. Precision Positioning Table CTX is a table that utilizes Super Precision Positioning Table TX with linear roller ways for both the X and Y axes.

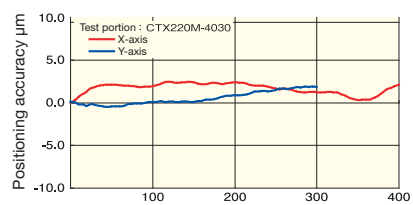
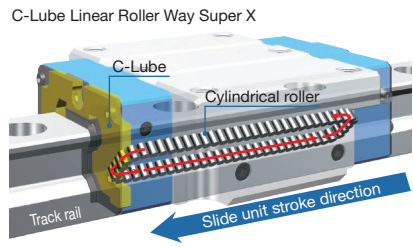
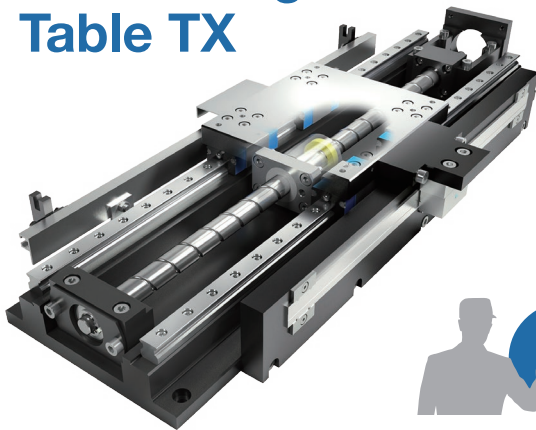
Problem Solved!



Precision Positioning Table CTX utilizes 2-axis to control accuracy and provides high precision positioning and high load capacity. CTX also has a built-in C-lube unit that allows it to operate for extended periods without the need for relubrication. Micro Precision Positioning Table TM is suitable for moving and handling.

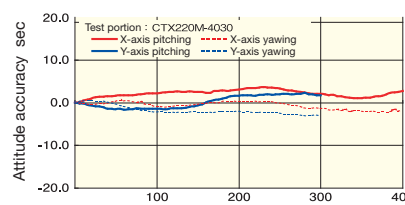
IKO Mechatronics Series Lineup

Ball Screw Driven/High Accuracy Super Precision Positioning Table TX



Super high positioning accuracy and resolution performance realized with an onboard super high accuracy linear encoder

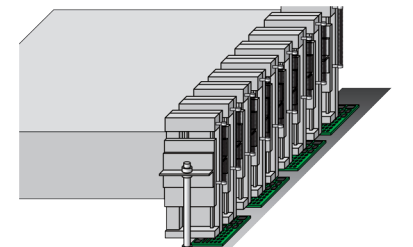
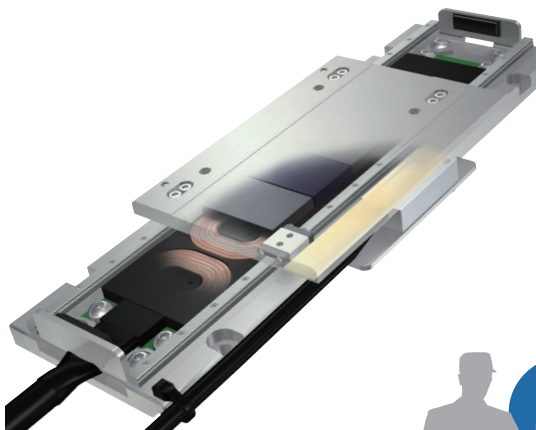
- High Rigidity/High Load Capacity
- 2 types of encoders
- Excellent vibration damping performance
- Maintenance free



Using C-Lube Linear Roller Way Super X ensures ultimate running performance

Customers' voice
Decisive factors for adoption!
High positioning accuracy. Good running straightness. High vibration damping performance realized larger motor gain. Resistant to disturbances.

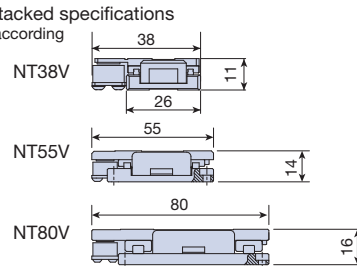
Linear Motor Driven/Compact Nano Linear NT...V



Possible to utilize thin form to form structures with stacked specifications
*For vertical mounting, we will select the spring mechanism according to your specific condition. Please contact IKO.

Specifications table	
Resolution	0.01~0.5µm
Positioning repeatability	±0.1~0.5µm
Stroke length	10~120mm
Maximum thrust	3~36N

- Moving magnet
- Ultra-low profile
- Cableless moving parts
- High cleanliness

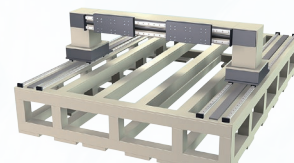


Customers' voice
Decisive factors for adoption!
High positioning repeatability and accuracy. Low profile for space-saving designs. It is suitable for clean environments with minimal spattering of grease.

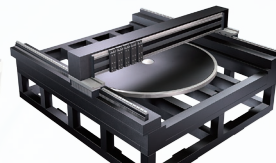
Let IKO help you with your product and equipment designs!

Consult with IKO technical experts from the conception stage. We will utilize our design and manufacturing know-how to provide customized support for your design, including trial production, evaluation, production, start-up support and after-sales service. We can also support ultra-high precision stages with granite surface plates.

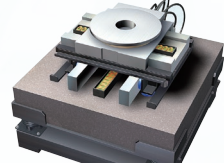
Equipment with frame/granite surface plate



Manufacturing equipment for LCD glass substrates

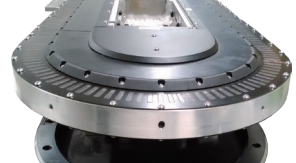


Manufacturing equipment for LCD glass substrates



Electronic parts inspection equipment

Flexible motion guide



Toki Mechatronics Center

IKO's Mechatronics Series is produced at the Toki Mechatronics Center (Toki City, Gifu Prefecture), which is a next-generation mechatronics production plant that combines state-of-the-art equipment and production systems to produce high-quality products.

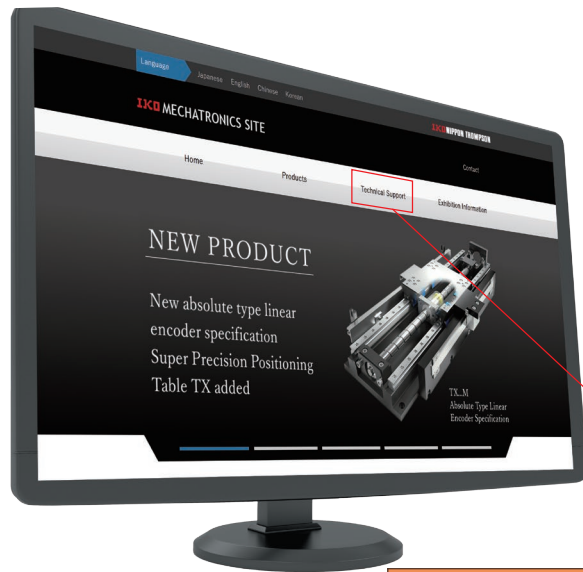


Toki Mechatronics Center is located in Aqua Silva Industrial Park in Izumi, Toki City, Gifu Prefecture. 40 minutes by car from Nagoya. Please contact us for visits and tours.

Introducing the Mechatronics Series Special Site

For more detailed information regarding the IKO Mechatronics Series, please visit the IKO official website (www.iko.com) or the Mechatronics Series Special website, which provides technical support functions, including product selection and service life calculators.

https://www.me-iko.com/mecha-tool/index_en.php



Calculation results				
Location	Factor of safety	Rating life	Life in hours	
Linear way	65.33	3,565±0	1,565±0	1,800
Ball screw	48.42	22,884	3,815±0	4.2
Support bearing	42.20	7,727	1,285±0	1.0

Note 1. The unit of rated life for the ball screw and support bearing is 1,000,000 cycles.
* The location with the smallest rating life value is to be the rating life according to the product number under consideration and the various conditions.
* The calculation results are those of theoretical calculation based on the conditions you have entered. Consider these calculation results as product selection, as conditions such as operating environment, lubrication, accuracy, and rigidity may vary significantly.
* The "L10" in the values indicates an exponent. (Example: 1,200±0 = 1,200x10⁰)
* Verify the operation pattern and motor output separately.

Table selection				
Specification number	TX 220 M - 10			
Model	TX 220 M			
Stroke	220			
Ball screw lead	10 Lead 10mm			
Products	Decentralized boost			
Load motor type	C-Lube drive system			

The ball screw type operation and maintenance may differ from the standard type.

Mechs				
No.	Wss [kg]	Center of gravity [cm]		
1	100	X	Y	Z
2	100	0	0	20

External force				
No.	External force [N]	Point of application [cm]		
1	100	X	Y	Z

Operation condition				
Condition	Unit	Operation condition		
Travel	mm	1	2	3
Speed	mm/min	1	2	3
Acceleration	mm/s ²	1	2	3
Travel time	sec	1	2	3
Travel distance	mm	1	2	3
Travel speed	mm/min	1	2	3
Travel acceleration	mm/s ²	1	2	3
Travel deceleration	mm/s ²	1	2	3
Travel time	sec	1	2	3
Travel distance	mm	1	2	3
Travel speed	mm/min	1	2	3
Travel acceleration	mm/s ²	1	2	3
Travel deceleration	mm/s ²	1	2	3

Operation pattern graph				
Graph showing operation pattern (Travel, Speed, Acceleration, Deceleration, Stop) over time.				